

BS730470MM
24" Built-in Steam Oven

AEG

BS730470MM

24" Built-in Steam Oven



OVEN FEATURES

- Electronic touch controls
- 73 litre oven capacity
- Inclined FloodLight™ focuses 100% on the food
- Isofront® Plus quadruple glazed door
- Fan controlled defrosting
- MaxiTray™ baking tray
- Anti-fingerprint stainless steel
- Interval steam
- Base heat finishing
- Keep warm
- Food probe
- Auto safety switch off and child lock

OVEN PROGRAMS

- 100% Steam – fixed temperature at 96°
- Interval Steam – 50% steam plus 50% heat
- Interval Steam – 25% steam plus 75% heat
- True Fan Cooking
- Pizza Mode
- Slow Cooking
- Top / Bottom Heat
- Frozen Foods
- Turbo Grilling
- Grilling
- Fast Grilling
- Keep Warm
- Bottom Heat
- Defrost
- Moist Fan Baking
- Bread Baking
- Steam Regenerating

OVEN CLEANING FEATURES

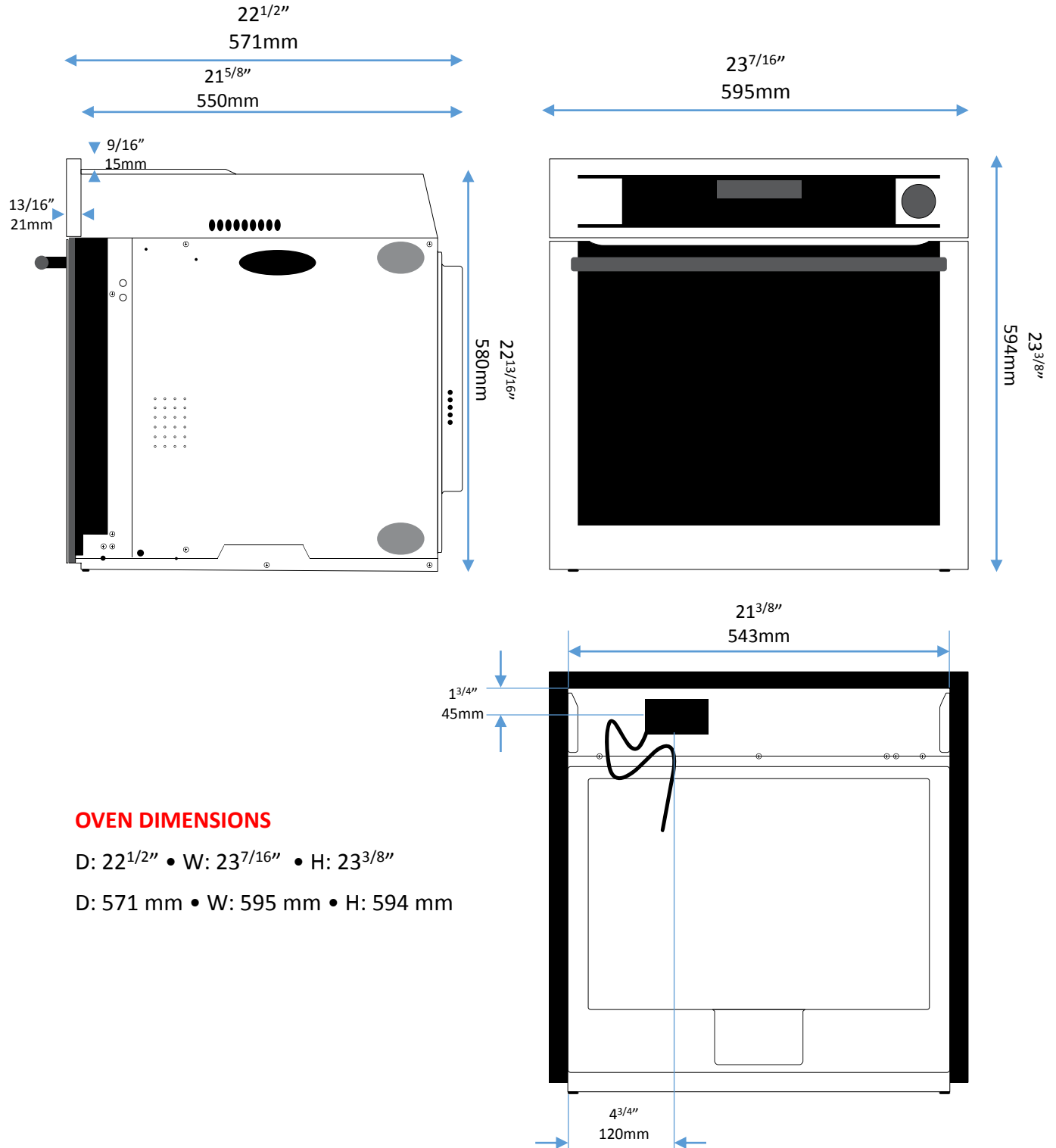
- Steam clean technology
- Diamond glazed enamel interior
- Removable door and glass panes for easy cleaning

OVEN ACCESSORIES

- Wire shelf
- Baking tray
- Grill / Roasting pan
- Meat Temperature Probe
- Steam Set – perforated and unperforated food tray
- Chrome oven rack : W: 18^{3/8}" D: x 15^{3/16}"
- Sponge 180

Specifications

BS730470MM



OVEN DIMENSIONS

D: 22 1/2" • W: 23 7/16" • H: 23 3/8"

D: 571 mm • W: 595 mm • H: 594 mm

Specifications (Column Installation)

BS730470MM

OVEN DIMENSIONS

- D: 22^{1/2}" • W: 23^{7/16}" • H: 23^{3/8}"
- D: 571 mm • W: 595 mm • H: 594 mm

CUT-OUT DIMENSIONS

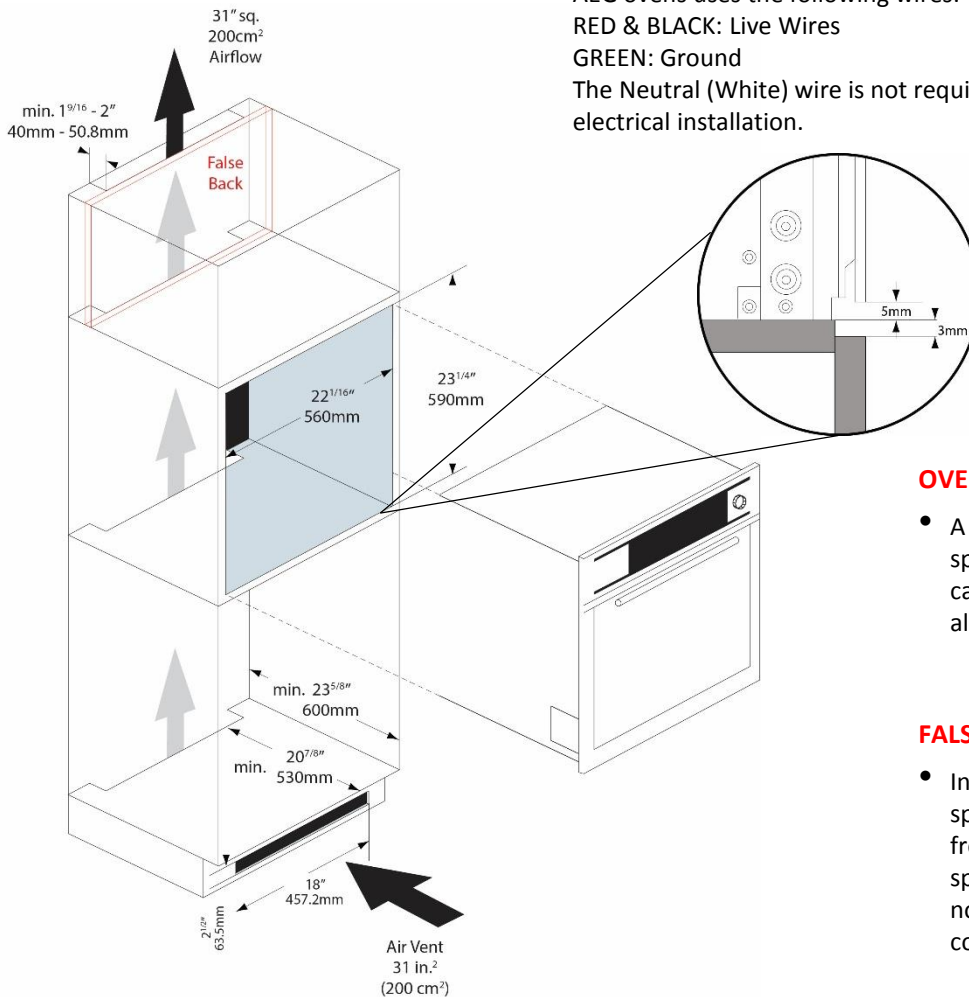
- D: min. 23^{5/8}" x W: min. 22^{1/16}" x H: 23^{1/4}"
- D: min. 600mm x W: min. 560mm x H: 590mm

ELECTRICAL REQUIREMENTS

- 208/230 Volt, 60Hz, 20 AMP, 3500W

IMPORTANT

- AEG ovens are supplied with a 5' long electrical cable and must be hard wired to the electrical supply
- AEG ovens uses the following wires:
RED & BLACK: Live Wires
GREEN: Ground
The Neutral (White) wire is not required for the electrical installation.



OVEN DOOR CLEARANCE

- A minimum of 3mm of clearance space is needed above the cabinet or appliance below to allow the oven door to open

FALSE BACKS

- Install false backs for storage spaces. This will prevent contents from falling through the vent space. In addition, warm air will not interfere with your stored contents

Specifications (Under Counter Installation)

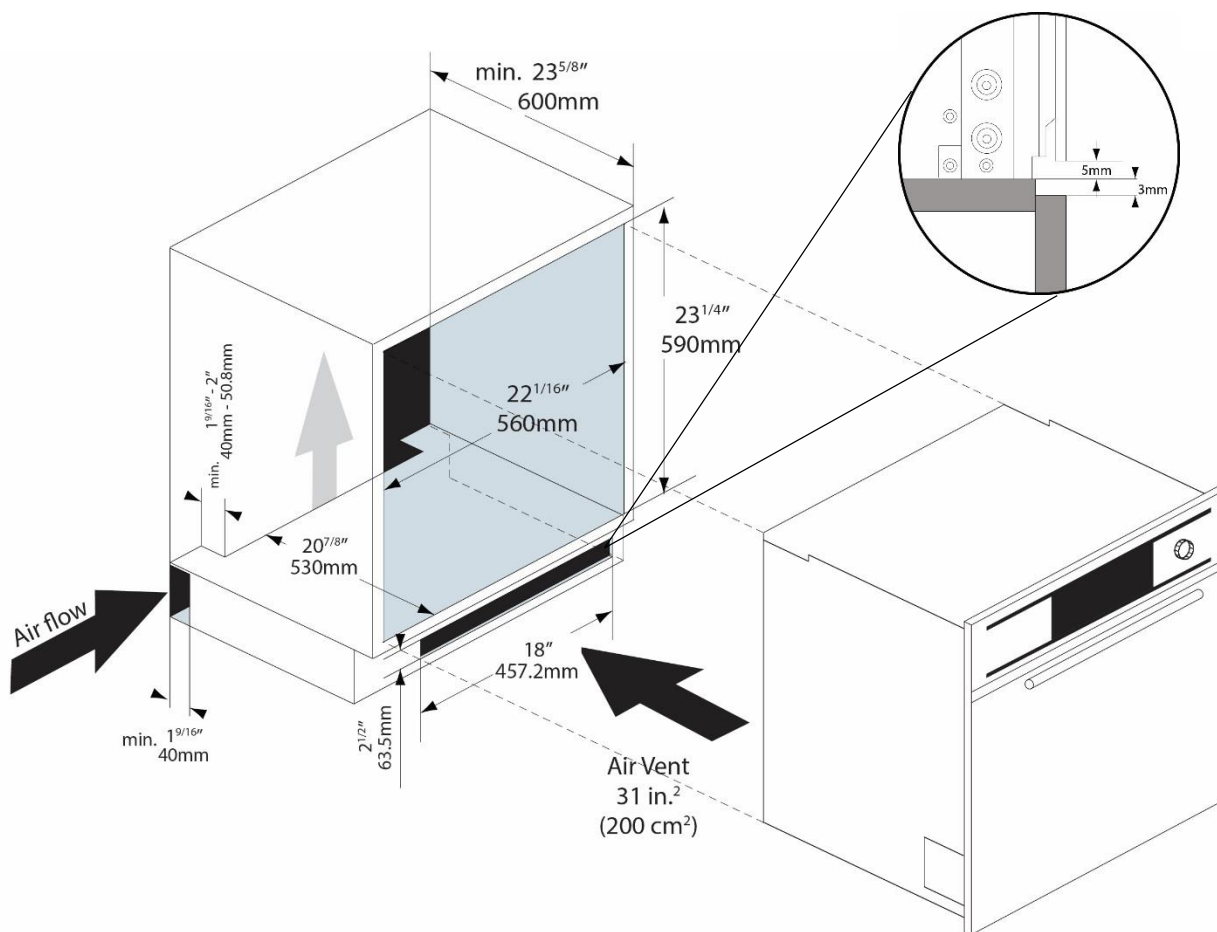
BS730470MM

AIR FLOW REQUIREMENTS

- If the oven is being placed under the counter, there must be a minimum gap of $1\frac{9}{16}$ " (4cm) cut out of the shelf behind the oven to allow air to flow freely.
- If sufficient air flow is not provided, the life of the appliance will be shortened.
- Cut-out in the toe kick is optional and recommended.
- Bottom vent grill (7427640) available.

OVEN DOOR CLEARANCE

- A minimum of 3mm of clearance space is needed above the cabinet or appliance below to allow the oven door to open



AEG

AEG Appliances are designed and manufactured to the highest standards. Each appliance is covered by a comprehensive 2-year parts and labour warranty.

Refer to product warranty policy for complete terms and conditions.

FOR PARTS AND SERVICE

Euro-Parts & Service

39822 Belgrave Road, Belgrave, ON. N0G 1E0

1 800 678 8352 (Canada) • 1 800 561 4614 (U.S.)

www.euro-parts.ca • parts@euro-parts.ca • service@euro-parts.ca

AEG appliances are imported and distributed in North America by Euro-Line Appliances Inc. For more information, please visit one of our showrooms or

www.euro-line-appliances.com www.elawest.com

EURO-LINE APPLIANCES INC.

871 Cranberry Court
Oakville, ON L6L 6J7 Canada
905 829 3980
1 800 421 6332

marketing@euro-line-appliances.com

EURO-LINE APPLIANCES WEST INC.

2912 West 4th Avenue
Vancouver, BC V6K 1R2 Canada
604 235 3980
1 855 ELA WEST (352.9378)

info@elawest.com

