

# LIFESTYLE TOWER

- MCD2665EM MicroMat-Duo
- PE3811-M Automatic Espresso Maker
- BS7304001M Combi-Steam Oven
- WD60-29 Warming Drawer



perfekt in form und funktion

# LIFESTYLE TOWER/

## MCD2665EM - MicroMat-Duo

### Features

- 24" (60cm) built-in anti-fingerprint stainless steel microwave
  - 30" installation use trim kit TK388SS
  - Infrared top grill heating element
  - Rotary knob with electronic push controls
  - Automatically programmed
  - Combined operation - microwave and grill cooking
  - Auto cook and auto defrost modes
  - Stainless steel interior
  - Glass turntable
  - Quick start button
- 

## PE3811-M - Automatic Espresso Maker

### Features

- 24" (60cm) built-in anti-fingerprint stainless steel automatic coffee maker
  - 30" installation use trim kit TK388SS
  - Prepares a range of beverages including espresso, lattes, and cappuccinos
  - Uses fresh beans ground as needed
  - Brew up to 4 cups of coffee
  - Coffee Taste function to give you precise control over each cup
  - Pre-programmed coffee selection
  - Removable 1.5L water tank
  - LCD digital display
  - Steam/water spout
  - Automatic self-cleans before every brew cycle
  - Quick start button
- 

## BS7304001M - Combi-Steam Oven

### Features

- 24" (60cm) wide anti-finger print stainless steel oven
  - MaxiKlasse™ 74L (2.61 cu.ft) capacity
  - Pyroluxe® PLUS self-cleaning
  - ProSight™ LCD touch display with electronic temperature control
  - Inclined FloodLight™
  - 12 cooking functions including True Fan convection
  - ThermiC° hot air cooking technology for perfect cooking
  - Temperature meat probe
  - SoftMotion™ door closing
  - Isofront® Plus triple glazed door
- 

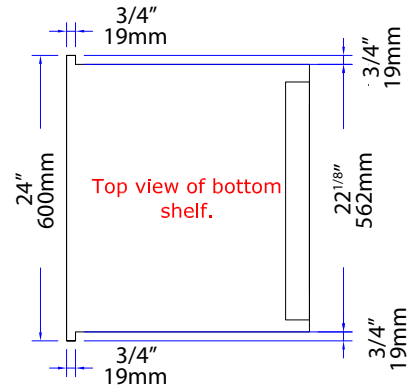
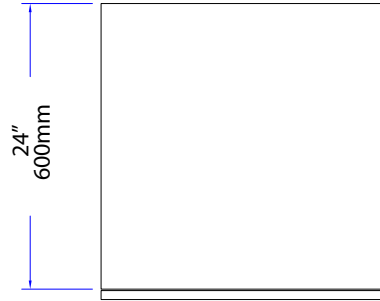
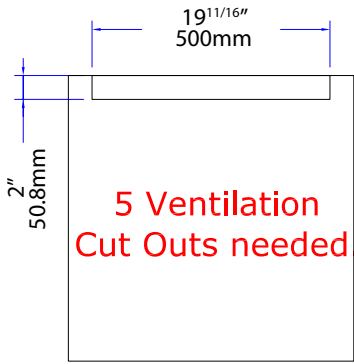
## WD60-29 - Warming Drawer

### Features

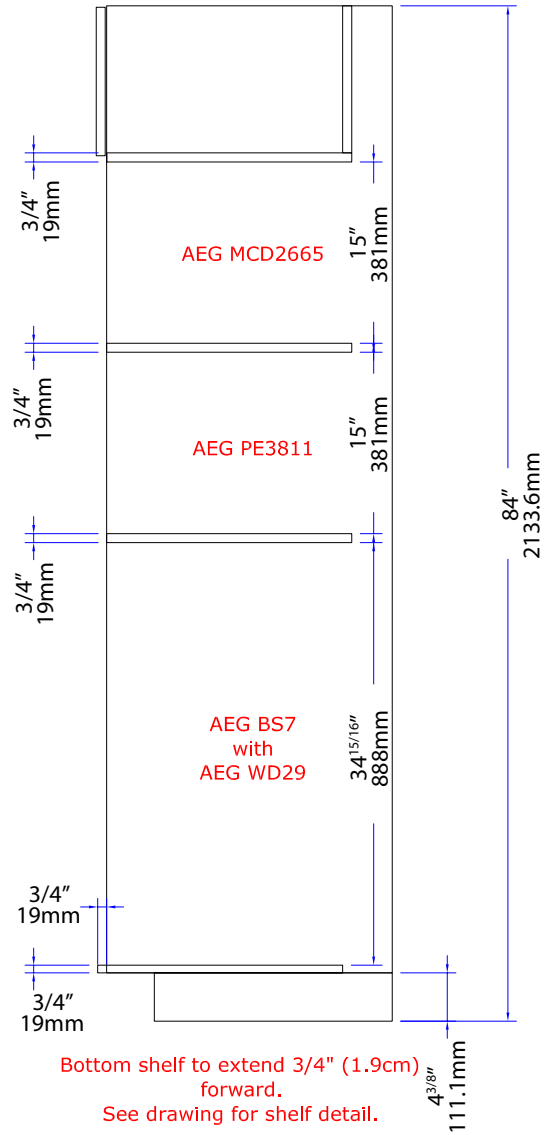
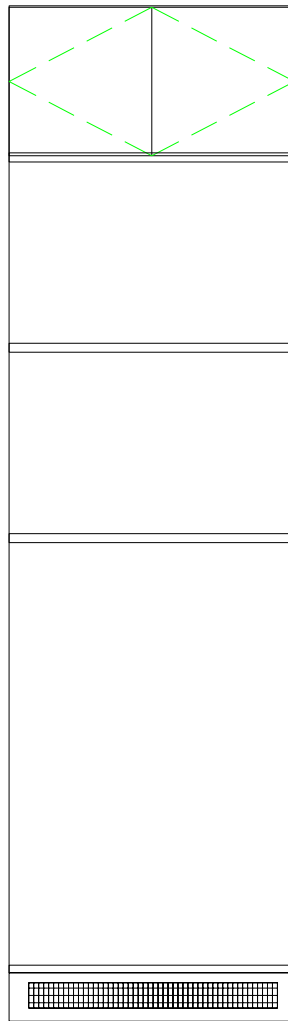
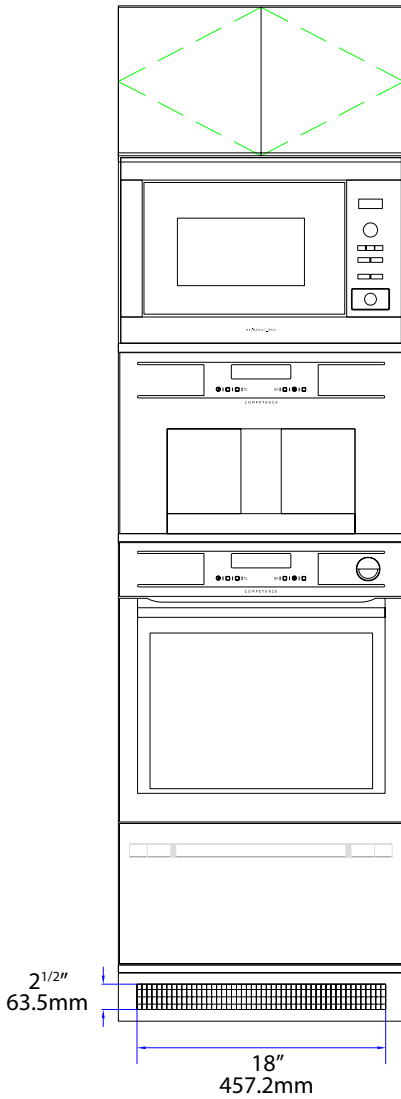
- 24" (60cm) wide stainless steel warming drawer & handle
  - 4 programs
  - 11.4" (29cm) high
  - 12 place setting capacity
- 



# LIFESTYLE TOWER/



Hinged upper doors/  
Door to overhang 1/4" (0.6cm) 1/8"  
(0.3cm) reveal at top of door



# LIFESTYLE TOWER/ Air Flow Requirements

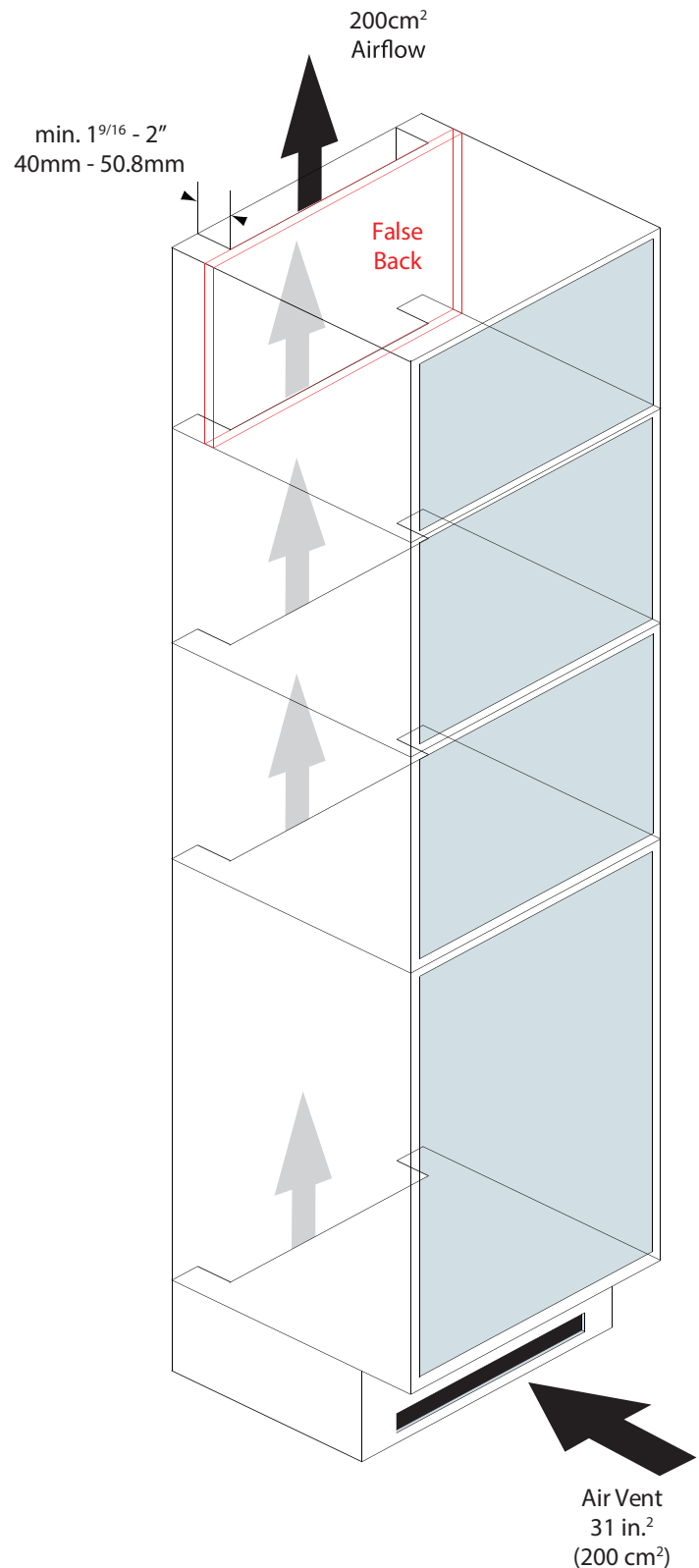
## Air Flow Requirements

\* If the oven is mounted in a tall or demi-tall cabinet, there must be a minimum gap of  $1\frac{9}{16}$ " (4cm) cut out of the shelf and behind the upper cabinet to allow air to flow freely

\* If insufficient air flow is provided, the life of the appliance will be shortened.

### \*NOTE\*

Install false backs for storage spaces. This will prevent contents from falling through the vent space. In addition, warm air will not interfere with your stored contents.



 **AEG**

perfekt in form und funktion

**AEG** products are designed and built to the highest standards.  
Each appliance is covered by a comprehensive 2 year parts and labour warranty.

Refer to product warranty policy for complete terms and conditions.

For Service & Parts  
**EURO-PARTS**  
1.800.678.8352

---

AEG appliances are imported and distributed in North America by Euro-Line Appliances Inc.  
For more information visit  
[www.euro-line-appliances.com](http://www.euro-line-appliances.com) / [www.elawest.com](http://www.elawest.com)

***EURO-LINE APPLIANCES INC.***

871 Cranberry Court  
Oakville, ON L6L 6J7  
Canada  
Toll Free: 1.800.421.6332  
Showroom: 905.829.3980  
[marketing@euro-line-appliances.com](mailto:marketing@euro-line-appliances.com)

***EURO-LINE APPLIANCES WEST INC.***

2912 West 4th Ave  
Vancouver, BC V6K 1R2  
Canada  
Toll Free: 1.855.ELA WEST (352.9378)  
Showroom: 604.235.3980  
[info@elawest.com](mailto:info@elawest.com)