

LUXURY TOWER

- LIEBHERR HWS1800 Wine Fridge
- PE3811-M Automatic Espresso Maker
- BS7304001M Combi-Steam Oven
- WD60-21 Warming Drawer



perfekt in form und funktion

LUXURY TOWER/

LIEBHERR HWS1800 - 18 Bottle Wine Fridge

Features

- 24" (60cm) built-in integrated wine storage cabinet
- 18 Bordeaux bottle capacity
- Insulated glass door with UV protection
- 2 solid birch shelves on telescopic rails
- LED dimmable ceiling light
- Right hinged - interchangeable
- Touch electronic controls for precise temperature control
- Vibration free compressors
- Activated charcoal filter
- Door and temperature alarm

PE3811-M - Automatic Espresso Maker

Features

- 24" (60cm) built-in anti-fingerprint stainless steel automatic coffee maker
- 30" installation use trim kit TK388SS
- Prepares a range of beverages including espresso, lattes, and cappuccinos
- Uses fresh beans ground as needed
- Brew up to 4 cups of coffee
- Coffee Taste function to give you precise control over each cup
- Pre-programmed coffee selection
- Removable 1.5L water tank
- LCD digital display
- Steam/water spout
- Automatic self-cleans before every brew cycle
- Quick start button

BS7304001M - Combi-Steam Oven

Features

- 24" (60cm) wide anti-finger print stainless steel oven
- MaxiKlasse™ 74L (2.61 cu.ft) capacity
- Pyroluxe® PLUS self-cleaning
- ProSight™ LCD touch display with electronic temperature control
- Inclined FloodLight™
- 12 cooking functions including True Fan convection
- ThermiC° hot air cooking technology for perfect cooking
- Temperature meat probe
- SoftMotion™ door closing
- Isofront® Plus triple glazed door

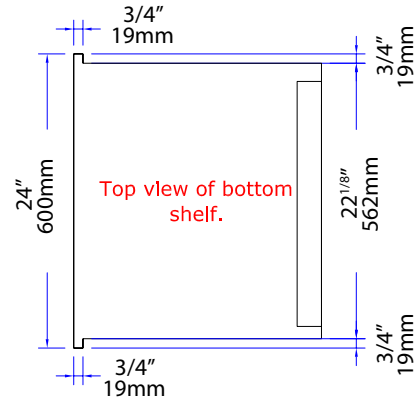
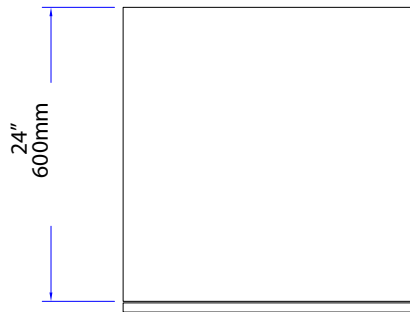
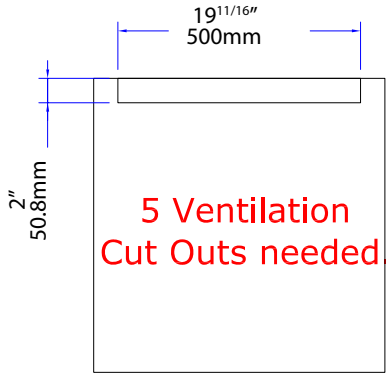
WD60-21 - Warming Drawer

Features

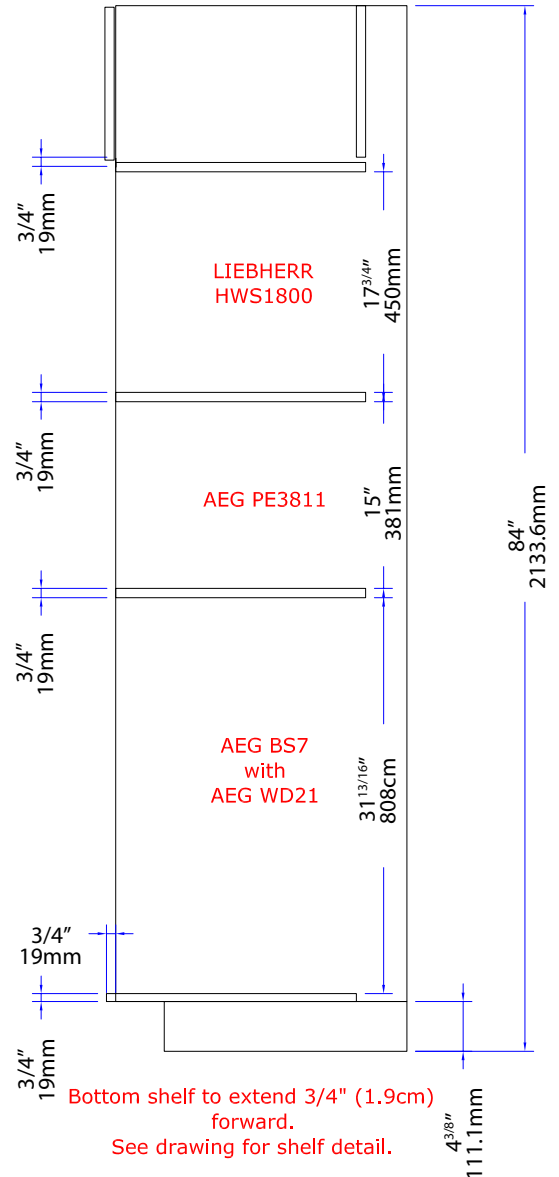
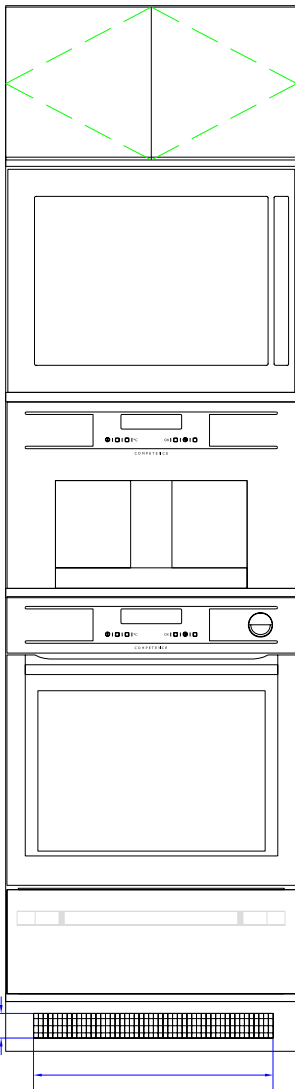
- 24" (60cm) wide stainless steel warming drawer & handle
- 4 programs
- 8.2" (21cm) high
- 9 place setting capacity



LUXURY TOWER/



Hinged upper doors/
Door to overhang 1/4". (0.6cm) 1/8"
(0.3cm) reveal at top of door



perfekt in form und funktion

LUXURY TOWER/ AIR FLOW REQUIREMENTS

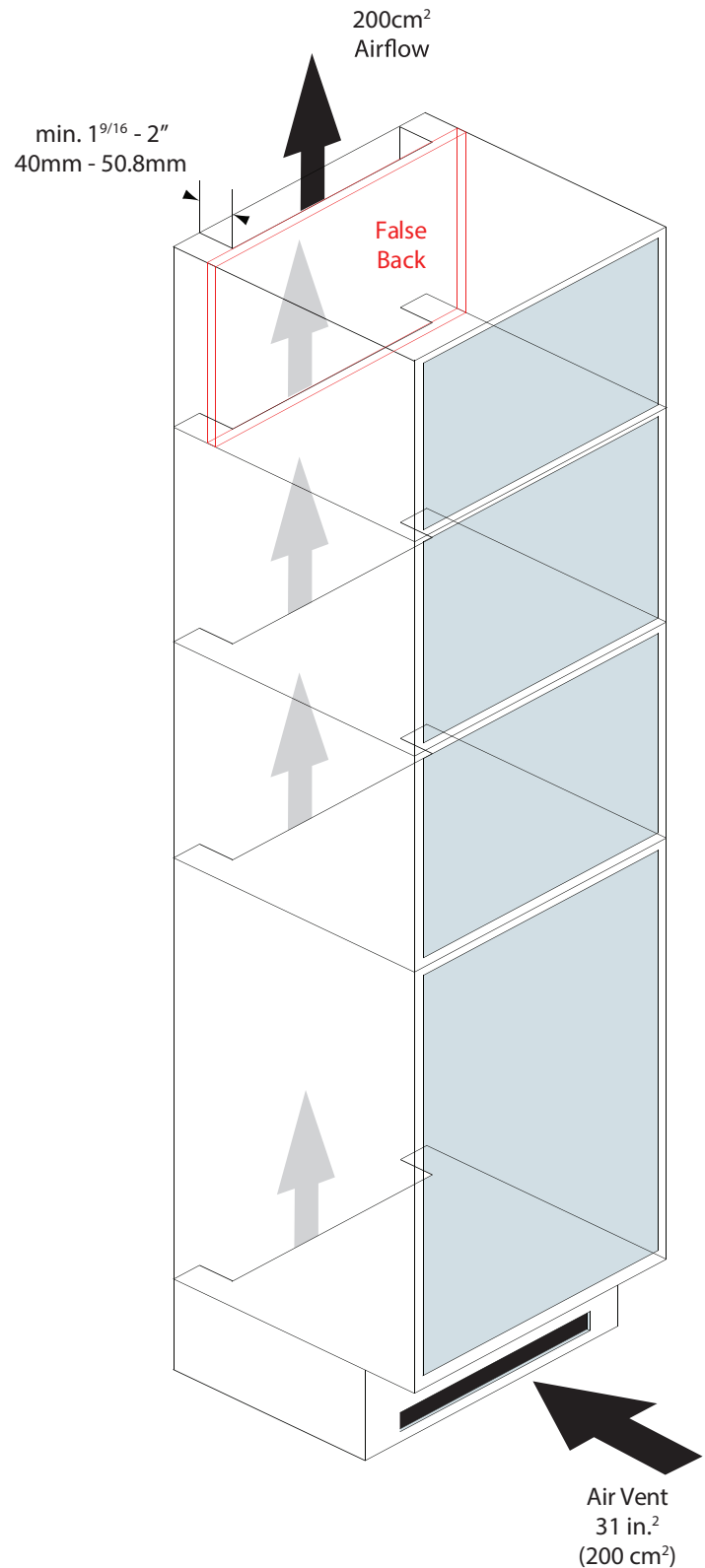
Air Flow Requirements

* If the oven is mounted in a tall or demi-tall cabinet, there must be a minimum gap of $1\frac{9}{16}$ " (4cm) cut out of the shelf and behind the upper cabinet to allow air to flow freely

* If insufficient air flow is provided, the life of the appliance will be shortened.

NOTE

Install false backs for storage spaces. This will prevent contents from falling through the vent space. In addition, warm air will not interfere with your stored contents.



AEG products are designed and built to the highest standards.
Each appliance is covered by a comprehensive 2 year parts and labour warranty.

LIEBHERR appliances are covered by a 2 year full parts and labour warranty , 5 year concealed parts and labour warranty, and a 12 year concealed parts warranty

Refer to product warranty policy for complete terms and conditions.

For Service & Parts
EURO-PARTS
1.800.678.8352

AEG and LIEBHERR appliances are imported and distributed in Canada by Euro-Line Appliances Inc.
For more information visit
www.euro-line-appliances.com / www.elawest.com

EURO-LINE APPLIANCES INC.

871 Cranberry Court
Oakville, ON L6L 6J7
Canada
Toll Free: 1.800.421.6332
Showroom: 905.829.3980
marketing@euro-line-appliances.com

EURO-LINE APPLIANCES WEST INC.

2912 West 4th Ave
Vancouver, BC V6K 1R2
Canada
Toll Free: 1.855.ELA.WEST (352.9378)
Showroom: 604.235.3980
info@elawest.com